

CONTENTS

- 1 PURPOSE AND DESCRIPTION
- 2 SAFETY PROVISIONS
- 3 TECHNICAL DATA
- 4 AUTHORISATION FOR USE
- 5 CONSTRUCTION REQUIREMENTS
- 6 OPERATION AND MAINTENANCE
- 7 ASSEMBLY
- 8 DISASSEMBLY

1. PURPOSE AND DESCRIPTION

The HT-BOX side container is designed for storing material and comes in three different lengths - 3, 4.5 and 6 meters.

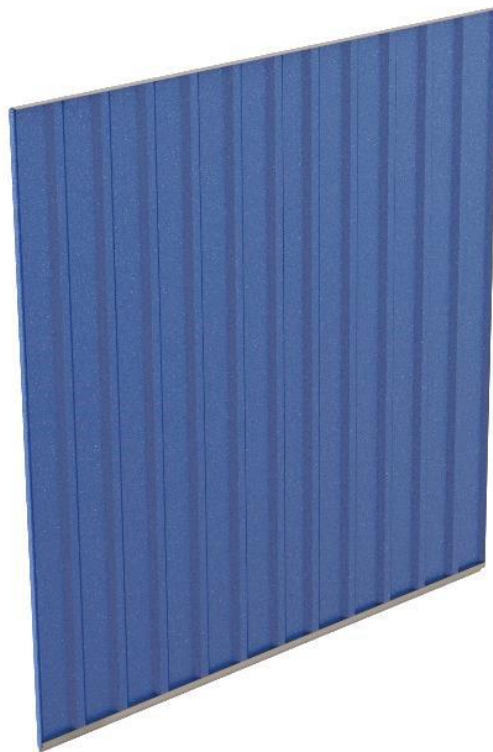
The container is delivered as a folded package for transport, which includes:

- Floor
- Side walls x2
- Back wall
- Front wall
- Partitions - number of partitions in walls depending on version
- Roof
- Corners - number of corners depending on the version

The **floor** is made of 32 mm thick, wooden, antifungal boards. The boards are screwed to profiles made of galvanized sheet metal with the help of special screws. Profiles are 70 mm high which makes it easy to transport a container with a forklift truck equipped with extensions. The sides of the floor are protected with a 2 mm galvanized profiles.



Side walls are made of 0.5 - 0.7 mm thick trapezoidal sheet metal, attached to a 2 mm thick, galvanized profiles.



The **back wall** is made of 0.5 - 0.7 mm thick trapezoidal sheet metal, which is attached to special supporting profiles made of 2 mm thick galvanized sheet metal.



The **roof** is made of trapezoidal sheet metal fixed to supporting profiles using airtight rivets.



The **front wall** is made of zinc-plated sheets riveted to supporting profiles. The doors are equipped with a system protecting them against breakage. The sashes are fixed to the frame by hot-dip galvanized hinges.



Partitions are made of 0.5 - 0.7 mm thick, trapezoidal sheet metal riveted to 2 mm thick, galvanized profiles.



Corners are made of 3mm thick sheet metal, painted with zinc primer and a surface red paint. They are used to connect floor, side walls and roof. Corners are equipped with bolts used for securing stacked packages. Holes in the corners are used to help attaching to the crane.



2. SAFETY REGULATIONS

The HT-BOX container complies with the applicable safety and accident prevention regulations.

1. The Container may be installed only by an adult person, physically and mentally fit, who has been trained in its installation.
2. The person assembling the container must be familiar with the health and safety regulations.
3. Any movements of the container using a forklift truck or crane, may only be carried out by a person with appropriate qualifications.
4. Manipulation of the container is permitted only provided that it is in compliance with this manual (see Technical Data).
5. The container may be moved only with its doors closed and secured.
6. It is forbidden to move the container with people inside.
7. The number of monters must be adequate to the size of the Container and in accordance with health and safety regulations.
8. The manufacturer is not liable for damage resulting from the use of the container for purposes other than those specified in section 1.
9. Containers may not be stacked on top of each other unless they are assembled in transport packages.
10. Before disassembling of the container, all objects should be removed from the inside. The container is to be dismantled at the end of its service life, when the individual parts or the whole container are no longer used, so that their functions do not have to be preserved. Disassembly of the container may be carried out only by a person trained in safety regulations.
11. The container shall be disposed of in accordance with the regulations of the disposal of metal and wood waste. The disposal of the container is the responsibility of its owner.

3. TECHNICAL DATA

Container 3M

Dimensions	Length[mm]	Width[mm]	Height[mm]	Weight[kg]
External	3142	2173	2230	430
Internal (door and light)	3007	1907	1968	430
Transport position	3142	2173	527	430

Container 4.5M

Dimensions	Length[mm]	Width[mm]	Height[mm]	Weight[kg]
External	4642	2173	2230	500
Internal (door and light)	4510	1907	1968	500
Transport position	4642	2173	527	500

Container 6M

Dimensions	Length[mm]	Width[mm]	Height[mm]	Weight[kg]
External	6142	2173	2230	710
Internal (door and light)	6021	1907	1968	710
Transport position	6142	2173	527	710

Transport:

- Forklift truck: forks have to be at least 1,8m long
- Crane: using the holes in the corners

Maximum Load:

- Forklift truck: 3000kg
- Crane: 1400kg
- Floor Load: 500kg/m²

4. RELEASE TO SERVICE

The HT-BOX container may only be put into service if employees have read and understood the installation instructions and have correctly assembled the container according to them. Installation must be carried out with great care and attention. All screws should be well-tightened.

5. CONSTRUCTION REQUIREMENTS

HT-BOX container must be placed on a leveled surface. When selecting the destination location for a container, the applicable fire safety regulations and the rules for the safe movement and transport of a container must be observed. Access to the container shall be in accordance with its use.

6. OPERATION AND MAINTENANCE

Only a person over 18 years of age, physically fit and properly trained may operate the container. The operating personnel must be familiar with this manual. The owner/user is responsible for the correct training of the operator. Maintenance of a container is based on a visual assessment of the condition of the container which should be done on average once a week. The hinges should be lubricated and the roof cleaned as required.

7. ASSEMBLY

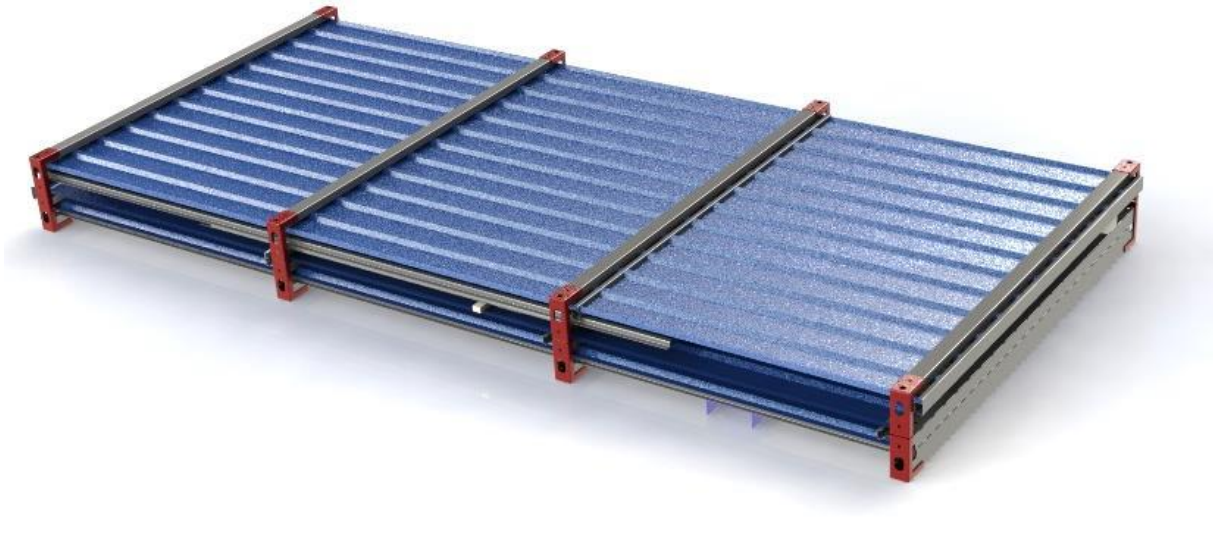
It is recommended that at least two people who are familiar with this manual perform the assembly work. Tools needed for assembly:

Socket wrench 19

Flat wrench 19

Hammer

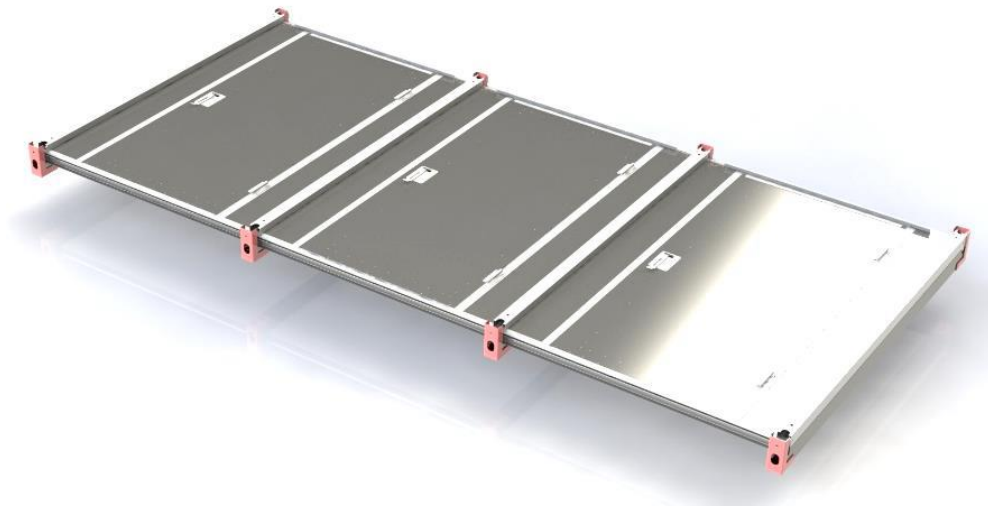
1. The container is removed from the transport position by disconnecting the upper corners and the safety profiles.
Start the disassembly by removing the roof, then the partitions, then side walls and then back wall.

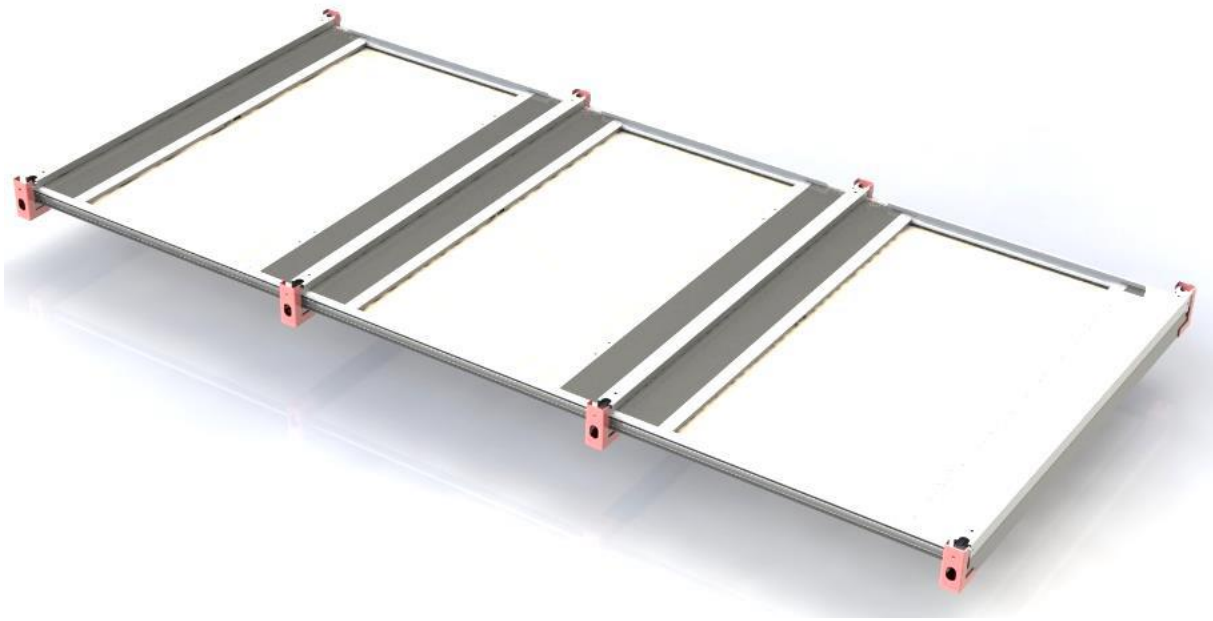
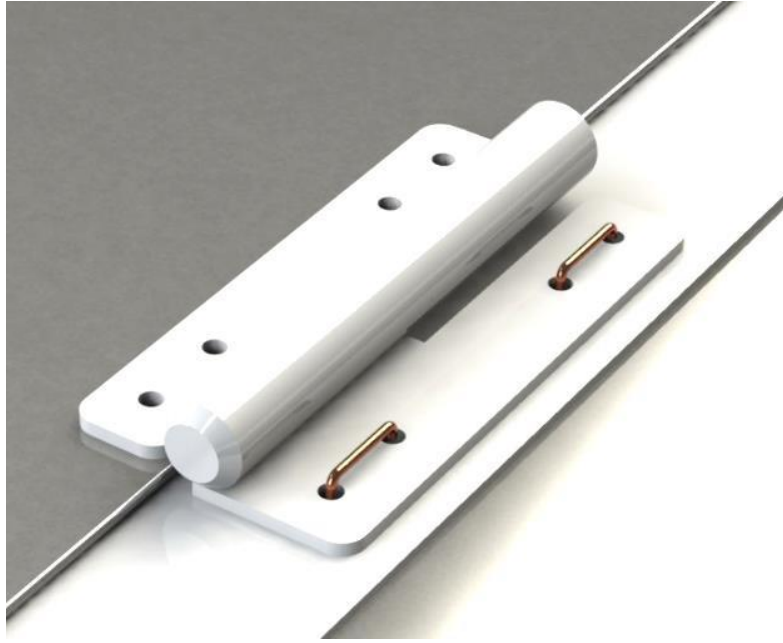


-
2. Start disassembling the front wall by de-assembling the door.
Remove the transport safety measures of the hinges and remove the door from the front wall.

Attention!

In the case of a 6M container, the transfer of the front wall to the final destination should be carried out by 6 people, placed at the corners and in the middle of its length.

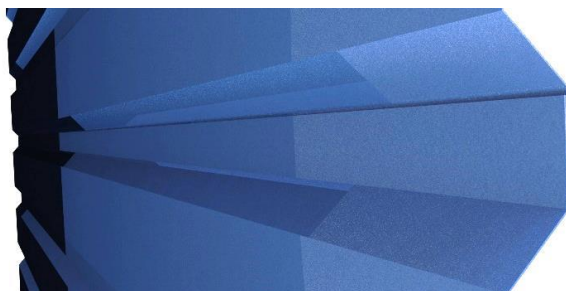
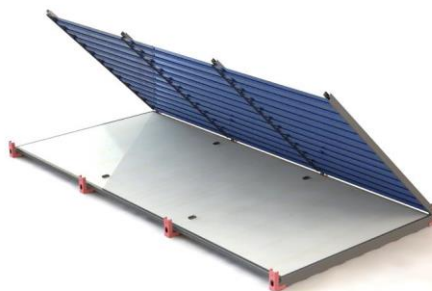




3. The **floor** of the container must be placed on a leveled surface. When selecting the destination location for a container, the applicable fire safety regulations and the rules for the safe movement and transport of a container must be observed. Access to the container shall be in accordance with its use.



-
4. Start assembling the container by attaching the back wall to the floor. The back wall shall be oriented in relation to the floor as shown in the picture. Special attention should be paid to the joint of the trapezoidal plates, which should be carried out in accordance with the pictures below.



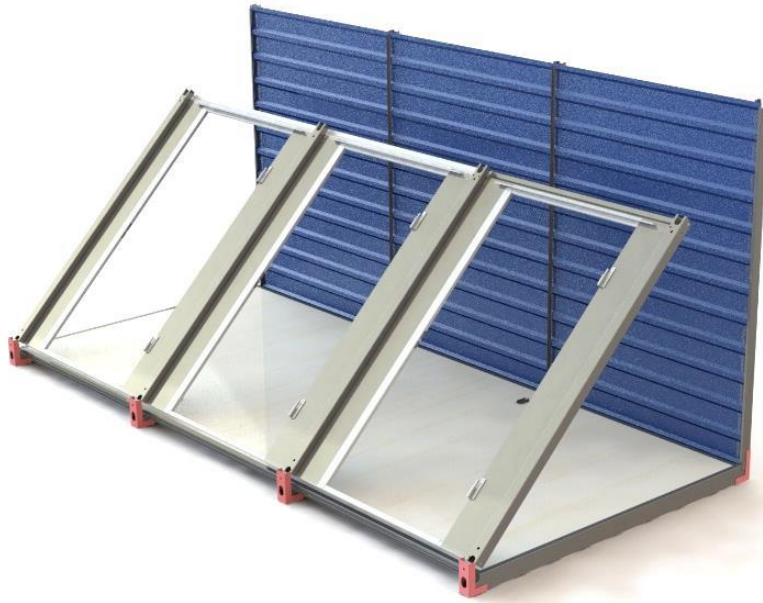
5. Place the profiles of the back wall in the corners of the floor. In the case of difficulties with the assembly, make sure the trapezoidal plates are on the **INSIDE** of the side floor profiles.



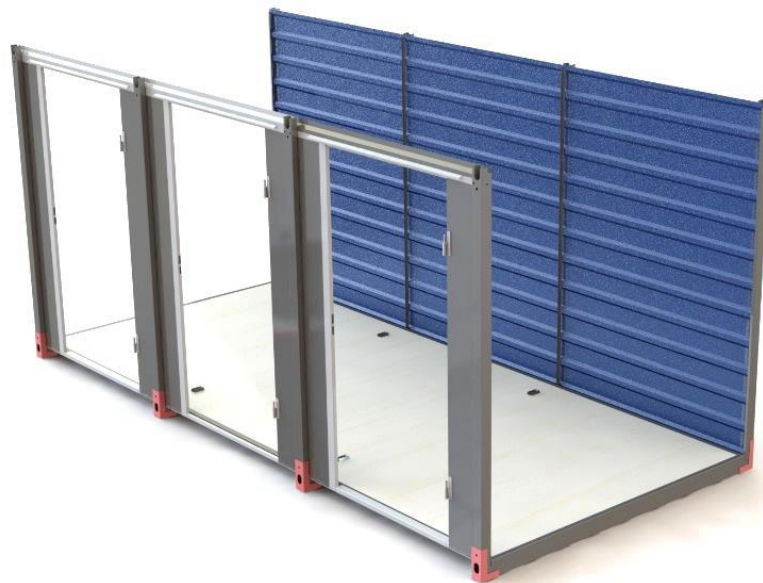
-
6. Wall profiles should be screwed to the corners using the included M12 screws and nuts to ensure the correct and strong connection of two units.



7. Make sure the front wall is placed in accordance with the picture below.



8. Mount the front wall as explained in point 6.



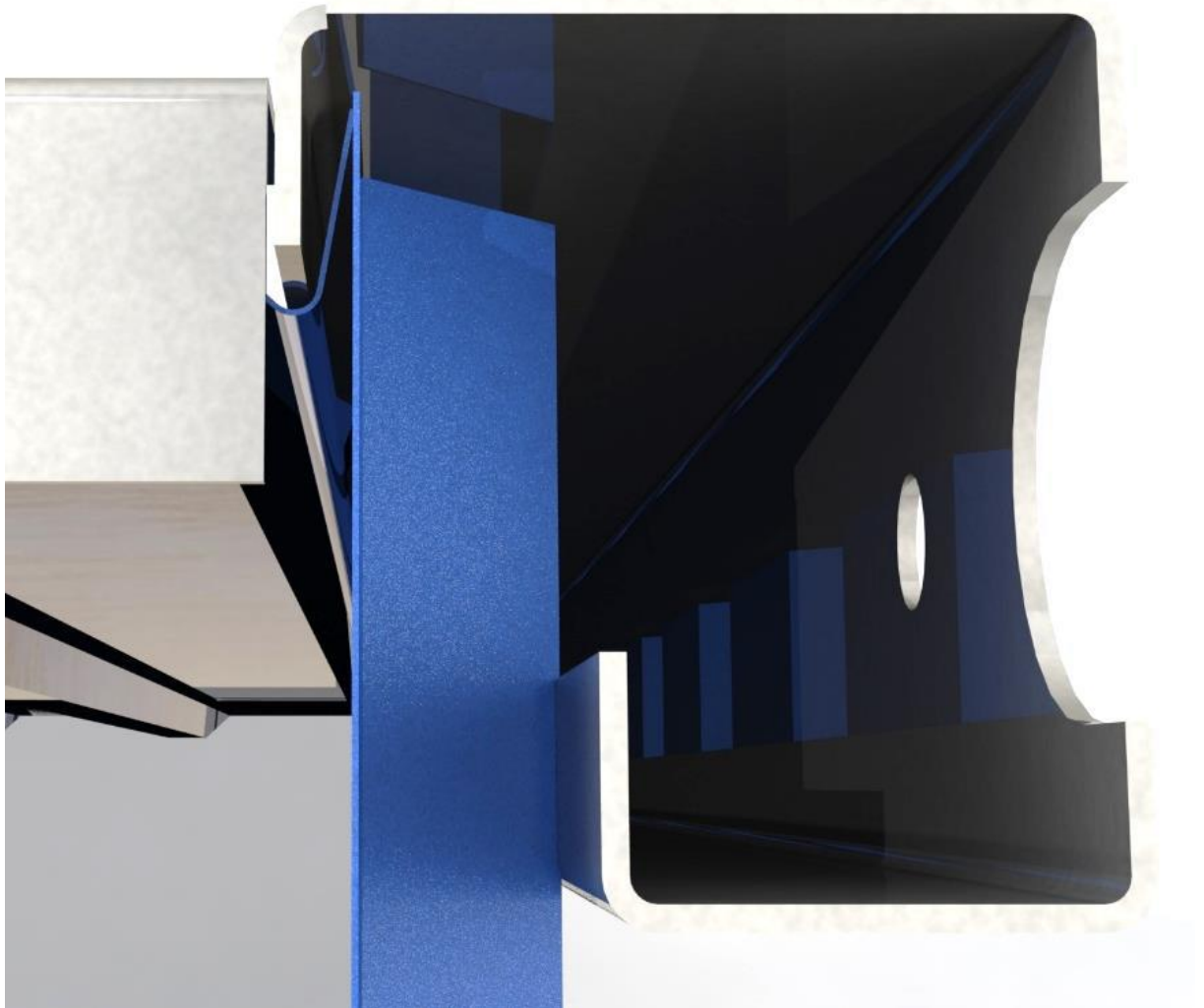
9. Attach the side wall to the floor as shown in the picture below.



10. Place the side wall in the upward position.



11. The **back wall** should be positioned vertically in such way that the trapezoidal sheet metal lock overlaps the side wall profile. Secure the back wall against uncontrolled falling out (e. g. support the wall with a board, from the inside of the container) before proceeding with further assembly operations).



12. Place the roof as shown in the picture below.



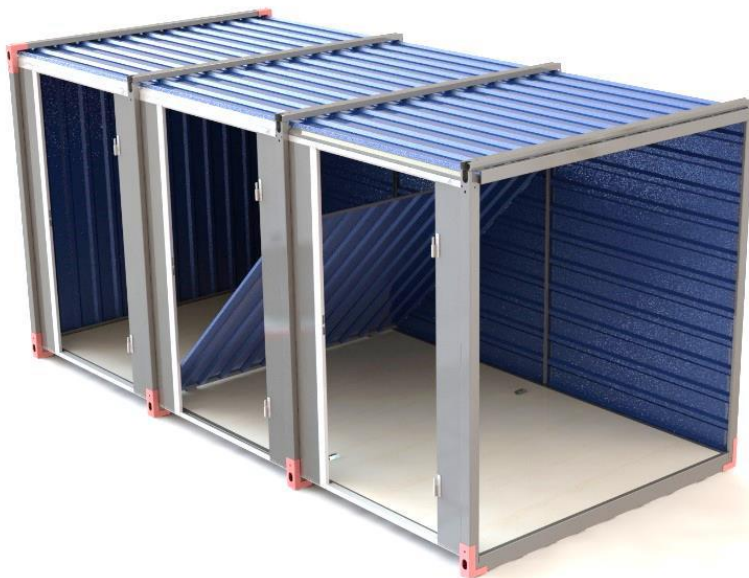
13. Set the roof atop.



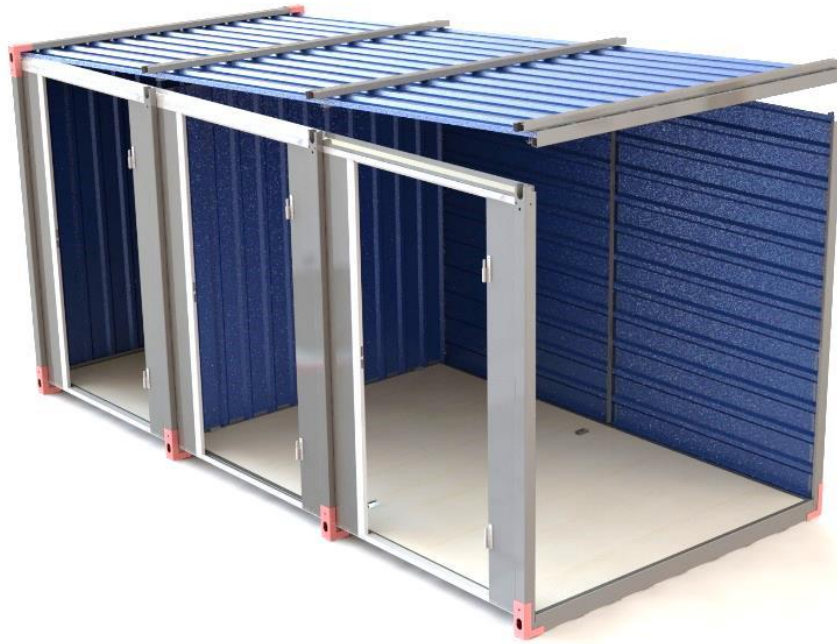
14. Screw in the two extreme corners as shown below.



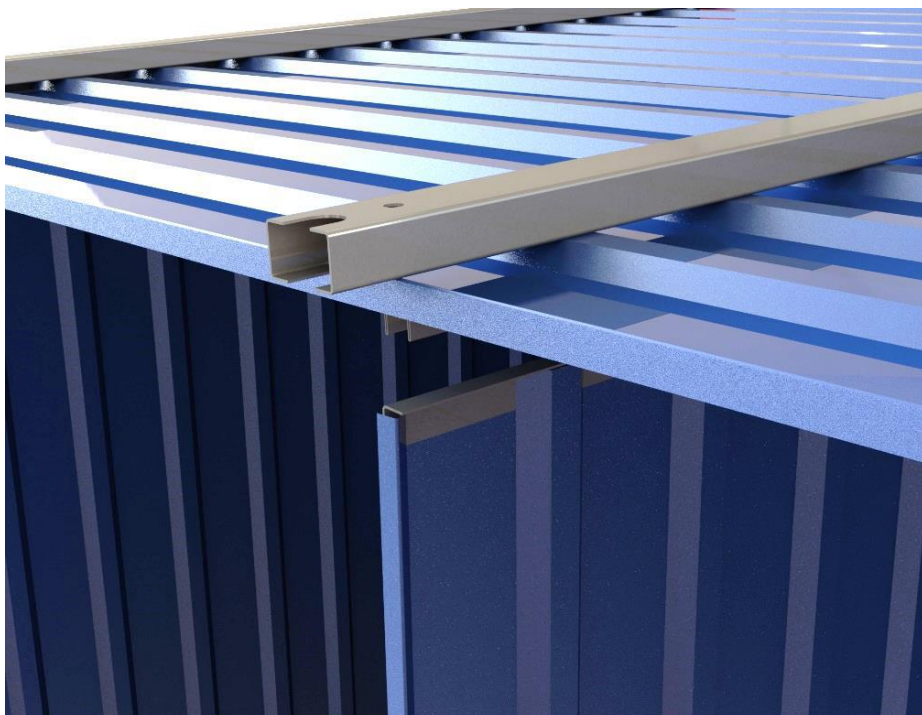
15. The partition wall should be placed as shown in the picture, placing the bottom profile of the wall in the brackets installed in the floor.



16. Slightly lift up the roof to fit in all the parts as shown in the picture below.



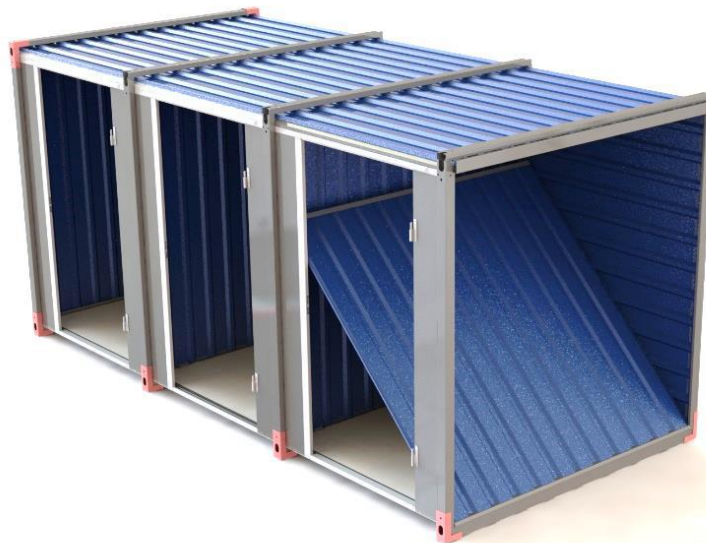
17. Place the partition wall vertically and while lowering the roof, set the wall in the roof's profiles.



18. Install the second partition wall in the same manner.



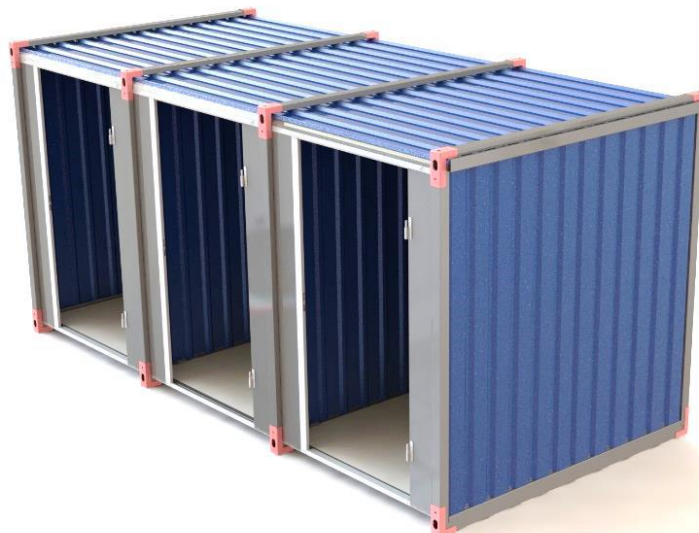
19. Place the side wall as shown in the picture below.



20. Install the side wall as explained in points 10 and 11.



21. Attach the roof to the assembled container using the corners and M12 screws and nuts.



22. Fit the door on the hinges.

Before using the door, make sure the hinges are positioned correctly in the holes in the frame.



8. DISASSEMBLY

The container can be disassembled for easier transport or storage. The process of container disassembly should be carried out on an empty container.

Tools for disassembly:

Socket wrench 19

Flat wrench 19

Hammer